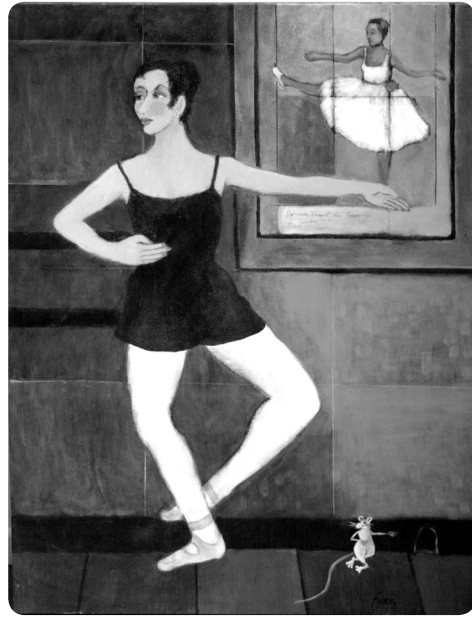




from *ABILENE Txtures* by Burgess Thomas



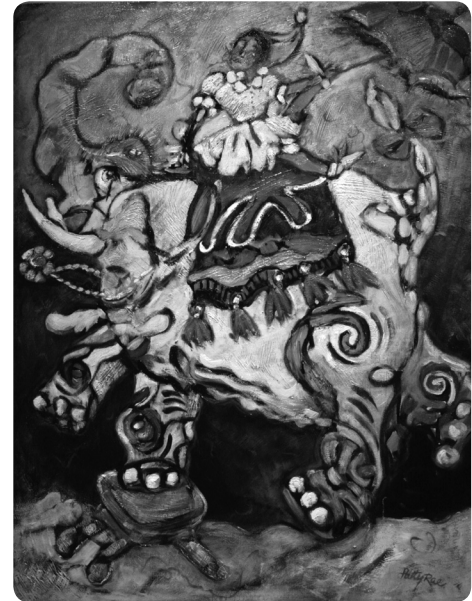
from *Motif in Mind* by Patty Rae Wellborn



from the *Creative Arts Club* exhibit by Ford Farr



from *New Work* by Kaleta Doolin



from *Motif in Mind* by Patty Rae Wellborn



THE CENTER  
FOR CONTEMPORARY ARTS

APRIL ARTWALK  
SPONSORED BY:

PHILPOTT  
FLORISTS/  
GREENHOUSES

PRESENTED BY THE CENTER FOR CONTEMPORARY ARTS

# ARTWALK

April 10, 2008

eARTH day

## ACTIVITIES AND ENTERTAINMENT

Come hear Dallas artist and videographer **Kaleta Doolin** at the **Center for Contemporary Arts** talk about her exhibit *New Work* at 6:30 PM.

The **ACU-HSU Tuba/Euphonium Ensemble** will be performing in Minter Park from 5:30 to 7:30 PM, the **Historic Paramount Theatre** will host a free Earth Day Music Concert featuring live acoustical music performances onstage from 6:00 to 7:30 PM. Pianist **Ric Richardson** will be playing at the Center, and a singing group from **Minda Street Church of Christ** will be performing in various locations throughout the evening. LIVE comedy sketches by state championship winner **Caleb Green** will be presented in front of the Cockerell Galleries on behalf of Abilene Acting Workshop, an educational program for aspiring professional artists in theatre and film.

**Marie Averitt** of the Texas Master Naturalists will be in the conference room of the **Center for Contemporary Arts** to help you create a tree-shaped bird feeder. Other members of the Master Naturalists will be present to talk about their organization. **Kathryn Short** will be on hand to show you a wonderful way to re-use your plastic shopping bags, and **Keep Abilene Beautiful** will be present with information about Xeriscape and 2007 Ladybird Johnson Christmas ornaments.

At the **Grace Museum**, create a String Art Earth to celebrate "eARTH day" in Make It and Take It, a free hands-on art activity for kids of all ages, available from 5:30 to 8:00 PM.

Celebrate our beautiful earth at the **NCCIL**! Make colorful, textured masterpieces to take home using one of the planet's most abundant natural materials: SAND! Art activity from 5:30 to 8:00 PM; Story Time at 6:30 PM.

The **Abilene Preservation League** invites you to ride the trolley with us on a historic tour of the Old Town Neighborhood. Tours leaving at 6:00 PM and 7:00 PM will take you past some of Abilene's oldest homes. Witness beautiful, historic architecture and learn the history of these homes built between the 1880's and 1920's. The trolley will board outside the **Elks Arts Center**. Admission is only \$1 per person (free to Abilene Preservation League members).

Nature's art is the draw this month at the **Abilene Public Library**. Fossils, gems, minerals, geodes and more will be on display courtesy of the Central Texas Gem & Mineral Society. As you stroll downtown during ArtWalk, you'll also want to stop in and see Debra Warr's fabulous mural devoted to all the wonders that spring from the imagination and the pages of children's literature.

**ACU\*Cockerell Art Gallery** will host a public reception during ArtWalk to honor the show, *Recent Work – Photography and Digital Mediums* by Nil Santana from 5:00 to 8:30 PM. Visit Cockerell Galleries "upstairs" to celebrate the grand opening of photographer Tammy Marcelain's studio. Also upstairs, artist and potter, Heather Turner welcomes new artist Joanna Fortson to FILOS, with a public reception.

"Abilene Through a Pinhole" – Come visit pinhole photographer **Henry Morgan** to see the photos you took! Your photos are developed and ready for last month's participants to pick up from Morgan's free art project! Stop by Cockerell Galleries to see your work on display! Didn't take a one-shot pinhole photo yet? Stop by this month to learn how you can participate.

CENTER FOR CONTEMPORARY ARTS | 220 CYPRESS | 325.677.8389 | WWW.ABILENEARTWALK.COM

APRIL ARTWALK  
SPONSORED BY:

PHILPOTT  
FLORISTS /  
GREENHOUSES

## SUPPORT AND FUNDING

ArtWalk, a major program of the Center for Contemporary Arts, is supported by: Abilene Cultural Affairs Council; the City of Abilene, Taylor County, and the Downtown Revitalization Program of the Tax Increment Finance District, Campbell Foundation, GAP Radio, Abilene Reporter-News, the Dodge Jones Foundation, the National Endowment for the Arts, and the Texas Commission on the Arts.

**ArtWalk 2008 Monthly Sponsors:** Minuteman Press, The Arrangement/T&P Event Center/The Warehouse Depot Company, First Texas Title - Bradshaw & McCall LLP, Philpott Florists/Greenhouses, CBS Insurance, Mike Dunnahoo's Star Dodge-Hyundai, Mall of Abilene, Lads and Lassies, Abilene Regional Airport, N-Tune Music & Sound, Ballet Abilene - Home of the Abilene Ballet Theatre, MCM Elegante Suites

To find out how you can participate in ArtWalk, contact Jamie Shelburne at 325-677-8389 or jamie@center-arts.com.

CENTER FOR CONTEMPORARY ARTS | 220 CYPRESS  
325.677.8389 | WWW.ABILENEARTWALK.COM



NATIONAL  
ENDOWMENT  
FOR THE ARTS  
A great nation  
deserves great art.



TEXAS  
COMMISSION  
ON THE  
ARTS

PRESENTED BY THE CENTER FOR CONTEMPORARY ARTS

# ARTWALK

April 10, 2008  
eARTh day

CENTER FOR CONTEMPORARY ARTS | 220 CYPRESS  
325.677.8389 | WWW.ABILENEARTWALK.COM

## GALLERIES AND MUSEUMS

**E The Center for Contemporary Arts**  
220 Cypress St.

Jane Adams Breed Gallery: *Motif in Mind* by Patty Rae Wellborn. This collection of whimsical ink drawings and illustrative paintings combines fascinating linework with bold colors and imagery.

Gallery 2: *ABILENE TXtures* by Burgess Thomas - Burgess Thomas is a local photographer who captures interesting compositions in unexpected places. Her work inspires viewers to stop and notice that which is often overlooked.

Gallery 3: **Creative Arts Club Annual Exhibit** - The 75th Annual Exhibit of the Creative Arts Club will be on display in Gallery 3 through April. The Creative Arts Club began in 1933, and has over thirty local members. There will be an opening reception for this exhibit held at 5:30 PM.

Gallery 4: *New Work* by Kaleta Doolin - Kaleta Doolin is an artist out of Dallas, Texas who brings us her fanciful creations through a variety of unconventional media including video and light box installations.

**\*PLEASE JOIN US FOR THE ARTIST TALK AT 6:30 PM\***

**F ACU\*Cockerell Gallery & Cockerell Studios**  
1133 N. 2nd St.

**ACU\*Cockerell Gallery: Recent Work - Photography and Digital Mediums** by Nil Santana

Cockerell Galleries "upstairs" is proud to announce its featured artist for April: the beautiful work of photographer **Samantha Manski**. Also on display are our newest artists, **Brittany Bennett** and **Stacy Horton**, of Studio Brista! Come visit with our artists and see the amazing works of **Ash Almonte**, **Hannah** and **Nancy Capra**, **TM Gand**, **Doug Hodel**, and **Jessica Natalee Templeton**. Got questions? **C. Kahl**, Clinical Hypnotherapist, has answers. Come see her at Cockerell Galleries. Please visit our website at [www.cockerellgalleries.com](http://www.cockerellgalleries.com).

**G The Grace Museum**  
102 Cypress St.

Main Gallery: *Picturing Eden*: An International Exhibit Organized by the George Eastman House. By looking at the concept of paradise and the garden through the photographic lens, *Picturing Eden* highlights the ongoing significance of a humanistic, culturally charged environment and its place in the history of art. This exhibit of over 100 contemporary photographs features more than 35 artists.

Second Floor: Gallery A: *Katrina: The Color of Loss*, Photography by Dan Burkholder. This exhibit brings something unique and haunting to our experience of the impact Hurricane Katrina had on the lives of those involved. *Katrina: The Color of Loss* is a series of photographs focusing on the remnants of homes and public spaces minus the former inhabitants. Gallery B & C: Closed for new exhibit preparation.

Second Floor: Children's Museum: Come Play and Learn in The Grace's Children's Museum, featuring many new exhibits that are certain to educate and entertain!

Third Floor: History Museum:  
Mallouf Boot Shop and Historic Period Rooms

**B 12th Armored Division Memorial Museum**  
1289 N. 2nd St.

Living History Interpreters will be dressed in 12th Armored Division WWII uniforms, and talking about WWII weapons. Free small gifts to children inside the gift shop.

**C NCCIL (National Center for Children's Illustrated Literature)**  
102 Cedar St.

The artwork of AP high school participants in the Young Masters juried art contest will be on display through April 10th.

**K Frontier Texas!**  
625 N. 1st St.

Come see the *Century of Adventure* exhibit. Frontier Texas! will be open from 9:00 AM - 6:00 PM. Receive \$1 off admission all day when you ask for the ArtWalk discount.

## SPECIALTY SHOPS

**V Cassandra's and Company**  
173 Pine St.

**T The Honeycomb Tree**  
1166 N. 2nd St.

**U Texas Star Trading Company**  
174 Cypress St.

## RESTAURANTS, COFFEE SHOPS, and COCKTAILS

**R The Beehive**  
442 Cedar St.

**P Cypress Street Station**  
158 Cypress St.

**O The Leaf**  
202 Cypress St.

**N Monks Coffee Shop**  
233 Cypress St.

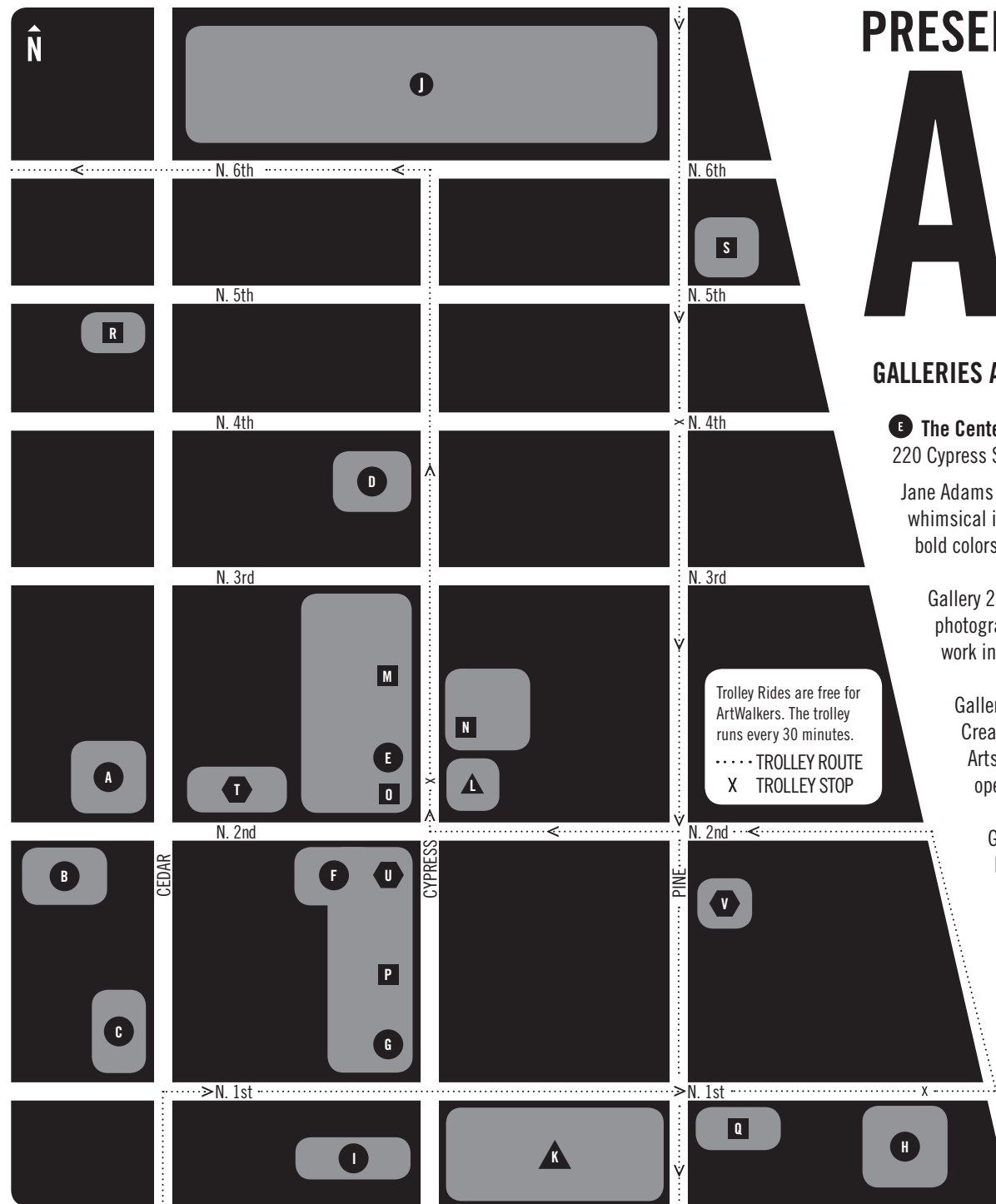
**M McKay's Bakery**  
226 Cypress St.

**Q The Warehouse Depot Company**  
901 N. 1st St.

**S The Civic Plaza Hotel**  
505 Pine St.

## PARK AND STREET VENDORS

**Dream On!** will offer free dream interpretations in front of Busch Jewelers. Please visit their website at [www.destinydreamz.com](http://www.destinydreamz.com). **Marianna Morrison** will be selling a variety of handmade goods in front of the Center. Fine Art Impressionist photographer, **Toro Saniya Vaun**, will be in front of Cockerell Galleries.



### CULTURAL VENUES

- A - Abilene Public Library
- B - 12th Armored Division Memorial Museum
- C - National Center for Children's Illustrated Literature (NCCIL)
- D - Historic Paramount Theatre
- E - The Center for Contemporary Arts
- F - ACU\*Cockerell 2nd Street Gallery and Studios
- G - The Grace Museum
- H - Frontier Texas!
- I - T&P Depot/Abilene Cultural Affairs/Visitors Bureau
- J - Abilene Civic Center

### PARKS

- K - Everman Park
- L - Minter Park

### RESTAURANTS AND COFFEE SHOPS AND COCKTAILS

- M - McKay's Bakery
- N - Monks Coffee Shop
- O - The Leaf
- P - Cypress Street Station
- Q - The Warehouse in the T&P
- R - The Beehive
- S - The Civic Plaza Hotel & Restaurant

### SHOPS

- T - The Honeycomb Tree
- U - Texas Star Trading Company
- V - Cassandra's and Company

APRIL ARTWALK SPONSOR: PHILPOTT FLORISTS/GREENHOUSES